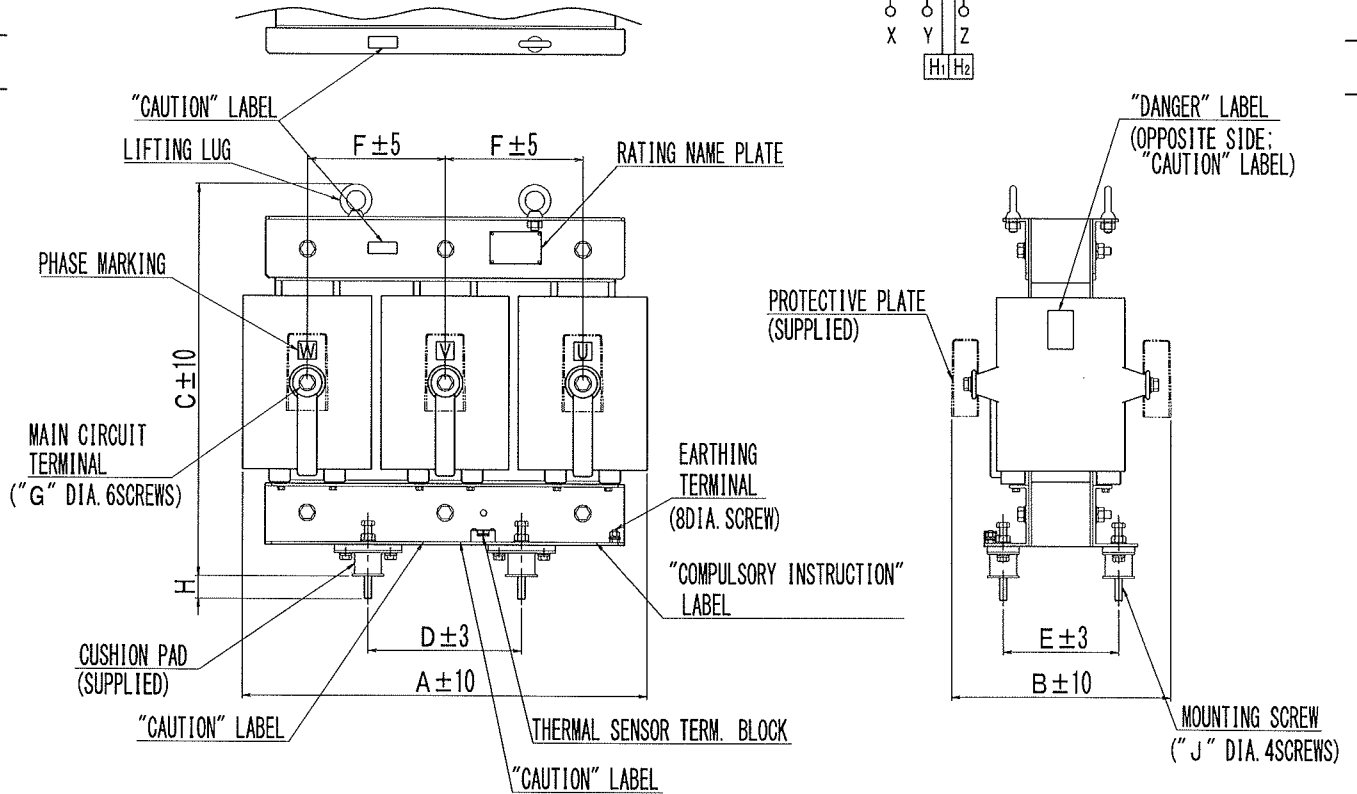
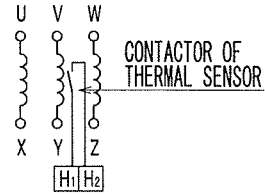


SERIES REACTOR FOR POWER CAPACITOR

TYPE	LR-MB	PHASES	3 PHASE
SERVICE LOCATION	INDOOR ONLY	RATED FREQUENCY	Exclusively for 60 Hz
TEMPERATURE CATEGORY	-20/B (-20~+50°C)	REACTANCE	6 %
INSULATION LEVEL	22/60 kV	CURRENT CATEGORY	I
CIRCUIT VOLTAGE	6900 V	THERMAL CLASS	F
RATED VOLTAGE	254 V	APPLICABLE STANDARD	JIS C 4902-2

CONNECTION



No.	TOTAL OUTPUT (kvar)	CAPACITOR OUTPUT (kvar)	RATED OUTPUT (kvar)	RATED CURRENT (A)	DIMENSION (mm)										GROSS MASS (kg)
					A	B	C	D	E	F	G	H	J		
1	555	590	35.4	46.4	680	380	620	240	200	230	M12	35	M12	260	
2	555	590	35.4	46.4	752	465	740	350	200	255	M12	35	M12	410	

- Overload usage condition:
The maximum permissible current; 120% to the rated current, under the condition of the 5th harmonic current not exceeding 35% to the rated current.
- Connect the thermal sensor contact to a trip circuit to protect the reactor.
- Specifications of the contact: Close at the temperature set (N/O contact)
AC 125V 15A
DC 125V 0.2A
- Terminal fastening Torque
M12 screw 23 ~ 29 N·m
- The capacitor shall be designed for L=6%.

株式会社指月電機製作所 SHIZUKI ELECTRIC CO., INC

承認 APPROVED	照査 CHECKED	設計 DESIGNED
Nov. 13. '15	Nov. 13. '15	Nov. 13. '15
<i>Y. Hoga</i>	<i>Y. Hoga</i>	<i>H. Matsushita</i>

TITLE
OUTLINE OF SERIES REACTOR

DWG. NO.
M-Z15042-A